

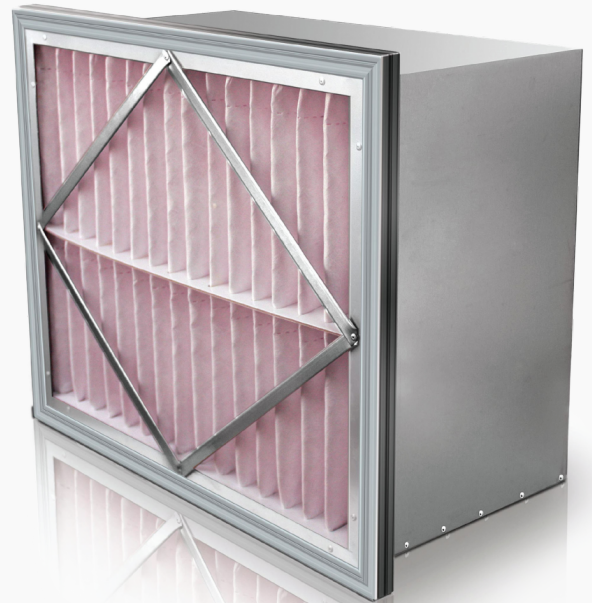
THE Q-AIR RIGID CELL FILTER IS AVAILABLE IN FIBERGLASS AND SYNTHETIC MEDIAS

RIGID CELL FILTER IS AVAILABLE IN 65-95% EFFICIENCIES MERV11-15

SINGLE HEADER AND BOX STYLE OPTIONS ARE AVAILABLE IN ALL MERV RATINGS AND MEDIAS

RIGID FILTER DESIGN IS IDEAL FOR SYSTEMS THAT REQUIRE EXTRA STRENGTH AND STURDINESS WHILE DELIVERING A HIGH LEVEL OF FILTRATION

PROVIDES A HIGH MERV RATING AND EXCELLENT DUST HOLDING CAPACITY FOR APPLICATIONS WHERE



Q-Air rigid cell filter is constructed with:

- Galvanized steel filter frame in 12" depth
- Filter separators ensure the layered filter media remains in the ideal filtration configuration during the filters life cycle
- Metal reinforcements throughout the filter make it perfect for variable air volumes systems
- Unique layering of filter medias ensure durability and performance
- Excellent filter life and lower pressure drop result in energy savings and lower operating costs

## FEATURES

Available in MERV 11, 13 and 15

Available in Synthetic and Fiberglass options

Single Header and Box Style available in all MERV Ratings

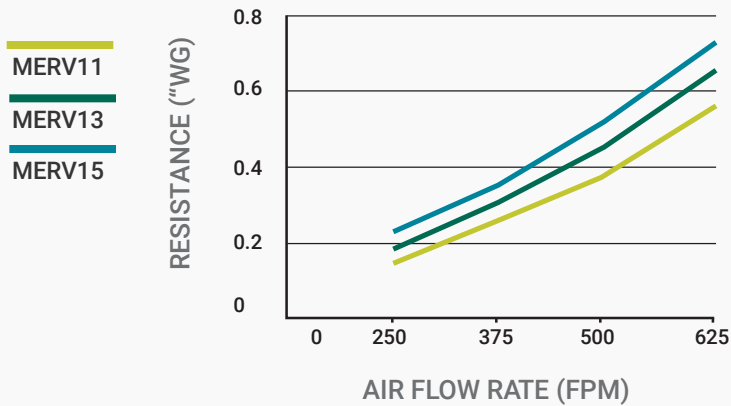
Rigid Design ensures excellent structural integrity

Achieves Longer Filter Life

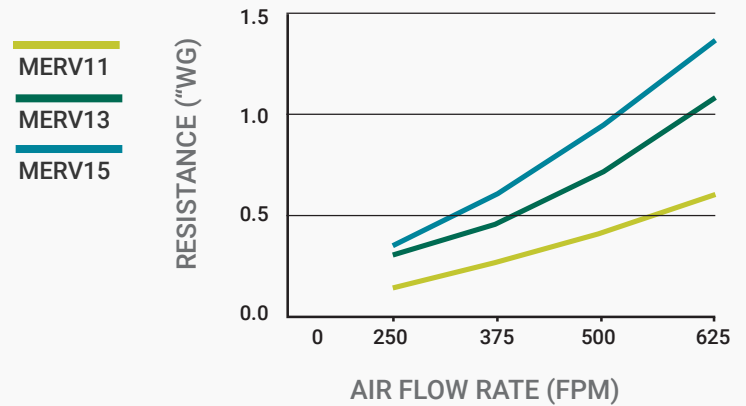
## APPLICATIONS

- Office Tower
- Schools/Educational Institutions
- Manufacturing
- Hospital Applications
- Long Term Living Facilities

## INITIAL RESISTANCE (W.G.) - SYNTHETIC RIGID CELL DATA



## INITIAL RESISTANCE (W.G.) - FIBERGLASS BAG DATA



## INITIAL RESISTANCE (W.G.) - SYNTHETIC BAG DATA

MERV	EFFICIENCY	250 FPM	375 FPM	500 FPM	625 FPM	FINAL RESISTANCE
11	60-65%	0.15	0.25	0.38	0.56	1.5
13	80-85%	0.19	0.31	0.45	0.65	1.5
15	90-95%	0.23	0.36	0.52	0.73	1.5

## INITIAL RESISTANCE (W.G.) - FIBERGLASS BAG DATA

MERV	EFFICIENCY	250 FPM	375 FPM	500 FPM	625 FPM	FINAL RESISTANCE
11	60-65%	0.16	0.27	0.43	0.59	1.5
13	80-85%	0.3	0.47	0.74	1.07	1.5
15	90-95%	0.35	0.6	0.94	1.42	1.5